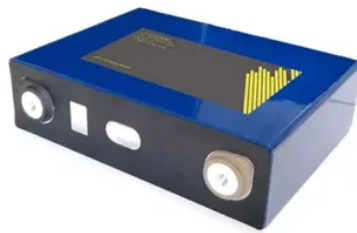




How big a battery does a 1200w inverter need



Overview

Note!The battery size will be based on running your inverter at its full capacity
Assumptions 1. Modified sine wave inverter efficiency: 85% 2. Pure sine wave inverter efficiency:90% 3. Lithium Battery:100% Depth of discharge limit 4. lead-acid Battery:50% Depth of discharge limit Instructions!. To calculate the battery capacity for your inverter use this formula Inverter capacity (W)*Runtime (hrs)/solar system voltage = Battery Size*1.15 Multiply the result by 2 for lead-acid type. You would need around 24v150Ah Lithium or 24v 300Ah Lead-acid Batteryto run a 3000-watt inverter for 1 hour at its full capacity Related Posts 1. What Will An Inverter Run & For How Long?

2. Solar Battery Charge Time Calculator 3. Solar Panel Calculator For Battery: What Size Solar Panel Do I Need?

I hope this short guide was helpful to you, if you have any queries Contact usdo drop a. Here's a battery size chart for any size inverter with 1 hour of load runtime Note! The input voltage of the inverter should match the battery voltage. (For example 12v battery for 12v.

Article Content

Calculate Battery Size for Inverter Calculator

Mar 14, 2025 · The Calculate Battery Size for Inverter Calculator helps you determine the optimal battery capacity needed to support your inverter system. By inputting critical parameters such ...

Appliance Wattage Chart: What Size of Jackery ...

Jan 17, 2024 · The Jackery Portable Power Station is a lithium battery-powered inverter generator with DC and AC outputs and USB charging connections ...

Calculator

To determine the size of the Inverter which perfectly suits your power backup requirement, here is the step by step calculations: Step 1: Find out your total power load that will be consume by ...

How Much Battery Capacity Do You Need With a 12V Inverter?

Jun 14, 2025 · Discover how to calculate the ideal battery capacity for a 12V inverter using simple math, practical examples, and money-saving tips for daily power.

How Many Batteries for 1200 Watt Inverter - ...

Sep 18, 2024 · Battery capacity = 1200 watts × 1 hour ÷ 12V ÷ 0.9 = 111Ah. This means that if you want a 1200-watt inverter to run at full load for 1 hour, you ...

How to Calculate Battery Size for Inverters of Any Size

So, whether you're asking how many amps a 1500w inverter draws, trying to gauge a 2000-watt inverter's amp draw or specifically finding out how many batteries you need for a 6000-watt ...

What Size Inverter Do I Need?

Jul 25, 2024 · To figure out how long a 100Ah battery will run a 1000W inverter, you need to consider the battery's voltage and the inverter's efficiency. ...

Can an Inverter Be Too Big for Your Battery System?

For a 12V 200Ah battery (2.4kWh), a 2000W inverter is ideal. Formula: Inverter Wattage ≤ (Battery Voltage × Ah Rating × 0.8). Factor in surge power needs but prioritize sustained ...

What Size Inverter Do I Need to Run an Air Fryer?

Air fryers can run on inverters, but it must be the right size. The battery must also have sufficient capacity to load the air fryer.

1500 Watt Inverter: Everything You Need to Know

May 18, 2025 · Looking for a reliable 1500 watt inverter? Learn what it powers, how many batteries you need, installation tips, and expert FAQs to make the most of your 1500W inverter!

Inverter Wire Size Calculator

Unsure how to connect your inverter and battery? Check The Inverter Store's handy calculator and guide that breaks down the complex process for you easily.

Inverter size for microwave?

Jul 29, 2020 · Batteries need to be considered, 1200w at 240v will draw around 120a from the batteries. OK for heating something up, but you wouldn't want it on for too long with a small ...

What Size Inverter Do I Need to Run a TV?

The right inverter size is necessary to run TV on solar power. Use these simple formulas to find out how many inverter watts a TV needs.

What Inverter Size Do I Need to Run a Kettle?

Most kettles need 800 to 1000 watts to run, with higher capacity models requiring more than 2000 watts. To get the right inverter size, use this simple formula: Total kettle watts + 20% = inverter ...

Inverter Wire Size Calculator Online

Mar 26, 2024 · An Inverter Wire Size Calculator is a specialized tool designed to help you determine the optimal wire size needed for your inverter setup. This ...

What Size Inverter Do I Need?

Learn how to calculate what size inverter you need with The Inverter Store's handy guide. We make the process straightforward for you to fit your exact ...

What Inverter Size Do I Need to Run a Coffee Maker?

A coffee maker requires a lot of watts to run. Make sure your inverter is the right size to get that coffee brewed right.

How To Size A Solar Inverter in 3 Easy Steps

After solar panels, the inverter is the most critical component of a solar system. But how big should your inverter be? In this guide, we share 3 easy steps on ...

What Inverter Size Do You Need to Run a Freezer?

Looking online for what inverter size to run freezers can be frustrating because most provide information about refrigerators. If you want to only run a chest freezer for instance, you can do ...

Inverter Battery Size Calculator

Calculate the ideal battery size for your inverter system. Input load, backup time, voltage, and battery type to find the required capacity.

Will a 1200W Inverter Run a Microwave?

A 1200W inverter can run appliances, but what about a microwave? Discover how much power a microwave uses and if this inverter is enough.

Will an Inverter Run a Portable Air Conditioner?

Check the battery instructions on the proper discharge rate to use. Just like with the inverter, the battery size we gave here is for the AC only. You will need a bigger battery bank or another ...

Solar Panel Size Calculator – Charge Your Battery ...

Apr 9, 2023 · Use our solar panel size calculator to find out the ideal solar panel size to charge your lead acid or lithium battery of any capacity and voltage. ...

Inverter Amp Draw Calculator

Feb 13, 2024 · The current drawn by a 1500-watt inverter for a 48 V battery bank is 37.5 amps. as per the inverter amp draw calculator.

How Big of an Inverter Can My Car Battery Handle?

Mar 26, 2025 · When considering connecting an inverter to your car battery, the first question we need to clarify is: how much power can your car battery ...

What Size Inverter to Run a Kettle?

If you're planning to run a kettle from an inverter, I strongly suggest getting yourself a lower wattage kettle. This will mean you don't need such a big ...

How to Calculate the Right Battery Size for Your ...

To help you find the perfect match, here's a step-by-step guide to calculate battery size based on your power needs and inverter specifications. 1.1. ...

HELP ! if my is power supply 1200 watts should i buy 1200 ...

Jan 13, 2014 · hey guys i need a UPS for my Workstation PC it has a 1200 watts power supply, i always use on a full load for 3d rendering in 2k resolution, i have a dual Cpu motherboard. I ...

How Many Batteries Do I Need for a 1000W or 2000W Power Inverter?

Jul 2, 2025 · Pro Tips for Optimizing Your Battery Setup Size for peak loads: A 2000W inverter may need 2x the battery capacity if you're powering a motor (like a fridge compressor) with a ...

What Size Inverter To Charge E-Bike Battery?

Ebike Inverter Size Chart What Is An Inverter? An inverter is a compact electronic component that converts direct current (DC) into alternating current (AC) at ...

Choosing the right inverter for your laptop

Jul 24, 2024 · However, laptops need a stable power supply to use. When camping, traveling in an RV, or encountering frequent power outages, you ...

What Inverter Size Do I Need to Run Power Tools?

Power tools demand lots of energy, but an inverter can work with the right specs. Use this chart to find the inverter size you need.

How to Determine What Size Inverter You Can Run Off a 100Ah Battery

Apr 21, 2025 · Determining the appropriate size of an inverter that can be run off a 100Ah battery involves understanding both the power output of the inverter and the energy capacity of the ...

The Ins and Outs of an Inverter!

Sep 2, 2021 · $1000W + 1200W = 2200W (+20\%) = 2640W$ Can my vehicle battery power an inverter? The easy answer to this question is to understand the ...

How to Calculate the Right Inverter Battery ...

Feb 24, 2025 · Learn how to calculate the right inverter battery capacity for your needs with a simple formula. Understand power requirements, efficiency ...

12V Guru - What size inverter do I need?

Dec 18, 2020 · Question to 12V Guru: What size Inverter would I need? I think I am missing out - we are out free camping and everyone camped around me ...

What size inverter do I need for my ...

We explain how to calculate what size inverter you need for your campervan, as well as inverter sizes required for some ...

How many 12 volt batteries to run an air ...

Feb 11, 2024 · I get commissions for purchases made through links in this post. Although they consume a relatively high amount of energy, it is possible to run ...

Contact Us

For more information, pricing, or custom solutions, please contact us:

Website: <https://www.umvuyoholdings.co.za>

Email: info@umvuyoholdings.co.za

Phone: +27 82 415 7396

Address: 21 St. Andrews Drive, Sandton, Johannesburg, 2196, South Africa

This document is for informational purposes only. Specifications subject to change without notice.

